

ZINE STONE







OUR STORY

Since 1991, the likes of **ZINESTONE** has been excavated and refined into fine decorative sheets across India. Today, **DESIGN DESIGN** LLC. is proud to embody a strong sense of sustainability in the construction industry within the UAE by introducing **ZINESTONE** as an affordable, green-conscious and convenient solution to decorative surface finishes.

“With over 20 years of professional interior design consultancy and fit-out contracting experience in the UAE, we can surely make wonders with this unique product!”

-Hazem El Khatib-



ZINE STONE

07
NOBLE GREY

08
PRECIOUS PECAN

09
DESERT ASH

10
OLYMPIC BRONZE

12
COCOA BLUSH

13
ROCK SALT

14
URBAN OBSESSION

16
MUTED STONE

18
GALLANT GREY

19
DUSTED MOSS

20
GOLDEN BARK

21
SPICY SANDALWOOD

22
DOVE SLATE

23
FRESH SAGE

24
VALLEY GREY

26
STORMY RETREAT

27
CLOUDED PEARL

28
BRUSHED BUKLE

29
DELHI BAZAAR

30
DESERT LUSH

31
TUSCAN TREASURE

33
AUTUMN BROWN

34
MUTED GREEN

35
MERCURY JEWEL

C O N T E N T

37
ROYAL BERRY

39
BETON GREY

40
BETON BEIGE

41
WHITE MARMOR

42
BLACK MARMOR

43
VINTAGE RUST

44
BRILLIANT RUST

45
GUIDELINE



NOBLE GREY

ZINE STONE

NOBLE GREY

SLATE STONE

A natural grey wave of
hand-crafted slate stone veneer



ARTICLE CODE	CATEGORY	DIMENSION	THICKNESS
MCNGSS01-UT	ULTRA THIN ZINESTONE	122CMX280CM	0.6-1 MM
		122CMX244CM	
		61CMX122CM	
MCNGSS01-T	THIN ZINESTONE	122CMX280CM	2-3 MM
		122CMX244CM	
		61CMX122CM	
MCNGSS01-A	ACCENT ZINESTONE	15CMX80CM	6 MM
MCNGSS01-DL	DECO-LIGHT ZINESTONE	122CMX280CM	2-3 MM
		122CMX244CM	
		61CMX122CM	



PRECIOUS PECAN

SLATE STONE

A viridescent flame-like
stone portrayed as a volcanic surface

ARTICLE CODE	CATEGORY	DIMENSION	THICKNESS
MCPSS01-UT	ULTRA THIN ZINESTONE	122CMX280CM	0.6-1 MM
		122CMX244CM	
		61CMX122CM	
MCPSS01-T	THIN ZINESTONE	122CMX280CM	2-3 MM
		122CMX244CM	
		61CMX122CM	
MCPSS01-A	ACCENT ZINESTONE	15CMX80CM	6 MM
MCPSS01-DL	DECO-LIGHT ZINESTONE	122CMX280CM	2-3MM
		122CMX244CM	
		61CMX122CM	



DESERT ASH

SLATE STONE

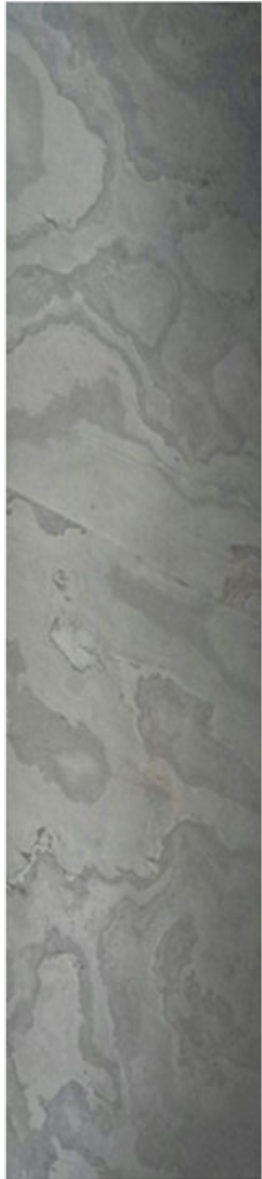
A burst of the finest slate comparable
to the ancient scroll

ARTICLE CODE	CATEGORY	DIMENSION	THICKNESS
MCDASS01-UT	ULTRA THIN ZINESTONE	122CMX280CM	0.6-1 MM
		122CMX244CM	
		61CMX122CM	
MCDASS01-T	THIN ZINESTONE	122CMX280CM	2-3 MM
		122CMX244CM	
		61CMX122CM	
MCDASS01-A	ACCENT ZINESTONE	15CMX80CM	6 MM
MCDASS01-DL	DECO-LIGHT ZINESTONE	122CMX280CM	2-3 MM
		122CMX244CM	
		61CMX122CM	

OLYMPIC BRONZE

SLATE STONE

A homogenous cloud of
bizzare grey irregularities



ARTICLE CODE	CATEGORY	DIMENSION	THICKNESS
MCOBSS01-UT	ULTRA THIN ZINESTONE	122CMX280CM	0.6-1 MM
		122CMX244CM	
		61CMX122CM	
MCOBSS01-T	THIN ZINESTONE	122CMX280CM	2-3 MM
		122CMX244CM	
		61CMX122CM	
MCOBSS01-A	ACCENT ZINESTONE	15CMX80CM	6 MM
MCOBSS01-DL	DECO-LIGHT ZINESTONE	122CMX280CM	2-3 MM
		122CMX244CM	
		61CMX122CM	

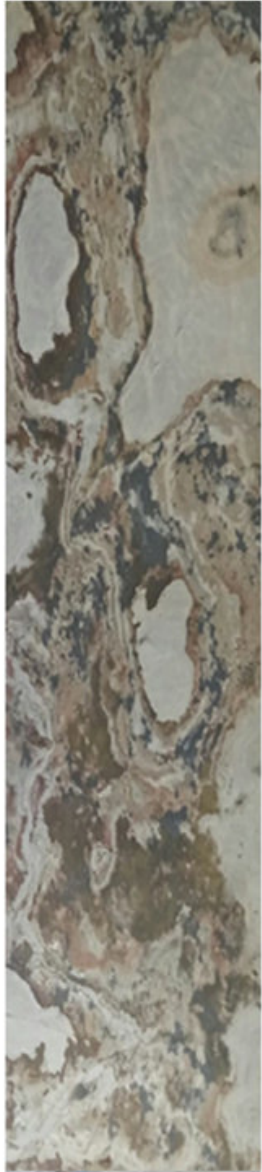


OLYMPIC BRONZE

COCOA BLUSH

SLATE STONE

A hand carved slate stone comparable
to the Adenium Obesum Socotora



ARTICLE CODE	CATEGORY	DIMENSION	THICKNESS
MCCBSS01-UT	ULTRA THIN ZINESTONE	122CMX280CM	0.6-1 MM
		122CMX244CM	
		61CMX122CM	
MCCBSS01-T	THIN ZINESTONE	122CMX280CM	2-3 MM
		122CMX244CM	
		61CMX122CM	
MCCBSS01-A	ACCENT ZINESTONE	15CMX80CM	6 MM
MCCBSS01-DL	DECO-LIGHT ZINESTONE	122CMX280CM	2-3 MM
		122CMX244CM	
		61CMX122CM	

ROCK SALT

SLATE STONE

An array of diagonal linear veins
engraved in a blossom grey stone

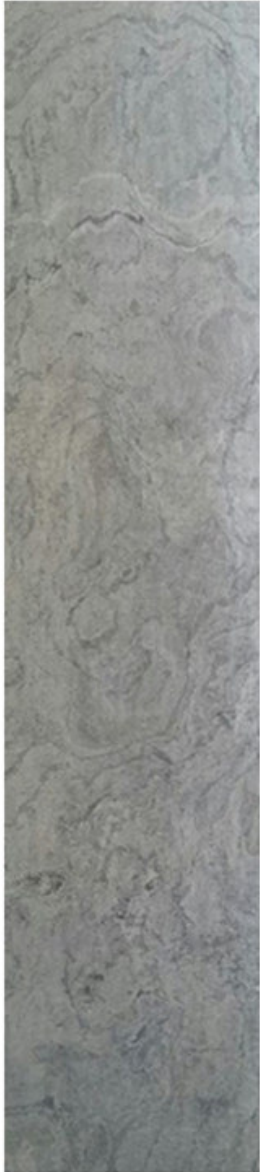


ARTICLE CODE	CATEGORY	DIMENSION	THICKNESS
MCRSSS01-T	THIN ZINESTONE	122CMX244CM 61CMX122CM	2-3 MM
MCRSSS01-A	ACCENT ZINESTONE	15CMX80CM	6 MM
MCRSSS01-DL	DECO-LIGHT ZINE STONE	122CMX280CM 61CMX122CM	2-3 MM

URBAN OBSESSION

SLATE STONE

A homogenous cloud of
bizzare grey irregularities



ARTICLE CODE	CATEGORY	DIMENSION	THICKNESS
MCUOQ01-UT	ULTRA THIN ZINESTONE	122CMX280CM	0.6-1 MM
		122CMX244CM	
		61CMX122CM	
MCUOQ01-UT	THIN ZINESTONE	122CMX280CM	2-3 MM
		122CMX244CM	
		61CMX122CM	
MCUOQ01-A	ACCENT ZINESTONE	15CMX80CM	6 MM
MCUOQ01-UT	DECO-LIGHT ZINESTONE	122CMX280CM	2-3 MM
		122CMX244CM	
		61CMX122CM	

URBAN OBSESSION



MUTED STONE

QUARTZITE STONE

A natural essence of the vague colours
of earth blended together faintly



ARTICLE CODE	CATEGORY	DIMENSION	THICKNESS
MCMSQ01-UT	ULTRA THIN ZINESTONE	122CMX244CM	0.6-1 MM
		61CMX122CM	
MCMSQ01-T	THIN ZINESTONE	122CMX244CM	2-3 MM
		61CMX122CM	
MCOBSS01-A	ACCENT ZINESTONE	15CMX80CM	6 MM
MCMSQ01-DL	DECO-LIGHT ZINE STONE	122CMX244CM	2-3 MM
		61CMX122CM	

MUTED STONE



QUARTZITE STONE

GALLANT GREY

QUARTZITE STONE

A deteriorated set of grey
waves dazzled in rich yet subtle spark



ARTICLE CODE	CATEGORY	DIMENSION	THICKNESS
MCGGQ01-UT	ULTRA THIN ZINESTONE	122CMX280CM	0.6-1 MM
		122CMX244CM	
		61CMX122CM	
MCGGQ01-T	THIN ZINESTONE	122CMX280CM	2-3 MM
		122CMX244CM	
		61CMX122CM	
MCGGQ01-A	ACCENT ZINESTONE	15CMX80CM	6 MM
MCGGQ01-DL	DECO-LIGHT ZINESTONE	122CMX280CM	2-3 MM
		122CMX244CM	
		61CMX122CM	



DUSTED MOSS

QUARTZITE STONE

A highly variant trend
of earthly vibrant colours

ARTICLE CODE	CATEGORY	DIMENSION	THICKNESS
MCDMQ01-UT	ULTRA THIN ZINESTONE	122CMX280CM	0.6-1 MM
		122CMX244CM	
		61CMX122CM	
MCDMQ01-T	THIN ZINESTONE	122CMX280CM	2-3 MM
		122CMX244CM	
		61CMX122CM	
MCDMQ01-A	ACCENT ZINESTONE	15CMX80CM	6 MM
MCDMQ01-DL	DECO-LIGHT ZINESTONE	122CMX280CM	2-3 MM
		122CMX244CM	
		61CMX122CM	

GOLDEN BARK

QUARTZITE STONE

A surface glistened by hints of gold in
portrayal of an enchanted herb



ARTICLE CODE	CATEGORY	DIMENSION	THICKNESS
MCGBQ01-UT	ULTRA THIN ZINESTONE	122CMX280CM	0.6-1 MM
		122CMX244CM	
		61CMX122CM	
MCGBQ01-T	THIN ZINESTONE	122CMX280CM	2-3 MM
		122CMX244CM	
		61CMX122CM	
MCGBQ01-A	ACCENT ZINESTONE	15CMX80CM	6 MM
MCGBQ01-DL	DECO-LIGHT ZINESTONE	122CMX280CM	2-3 MM
		122CMX244CM	
		61CMX122CM	

SPICY SANDALWOOD

QUARTZITE STONE

Bronze with a flare of aged metal, this surface speaks richness under light



ARTICLE CODE	CATEGORY	DIMENSION	THICKNESS
MCSSQ01-UT	ULTRA THIN ZINESTONE	122CMX280CM	0.6-1 MM
		122CMX244CM	
		61CMX122CM	
MCSSQ01-T	THIN ZINESTONE	122CMX280CM	2-3 MM
		122CMX244CM	
		61CMX122CM	
MCSSQ01-A	ACCENT ZINESTONE	15CMX80CM	6 MM
MCSSQ01-DL	DECO-LIGHT ZINESTONE	122CMX280CM	2-3 MM
		122CMX244CM	
		61CMX122CM	

SPICY SANDALWOOD

QUARTZITE STONE

Bronze with a flare of aged metal, this surface speaks richness under light



ARTICLE CODE	CATEGORY	DIMENSION	THICKNESS
MCSSQ01-T	THIN ZINESTONE	61CMX122CM	2-3 MM
MCSSQ01-A	ACCENT ZINESTONE	15CMX80CM	6 MM
MCSSQ01-DL	DECO-LIGHT ZINESTONE	122CMX144CM 61CMX122CM	2-3 MM



FRESH SAGE

QUARTZITE STONE

A fresh slate which brings about an aquatic rich theme to the surface

ARTICLE CODE	CATEGORY	DIMENSION	THICKNESS
MCFSQ01-T	THIN ZINESTONE	61CMX122CM	2-3 MM
MCFSQ01-A	ACCENT ZINESTONE	15CMX80CM	6 MM
MCFSQ01-DL	DECO-LIGHT ZINESTONE	122CMX144CM 61CMX122CM	2-3 MM

VALLEY GREY

QUARTZITE STONE

A silver rich surface with a soft wavy
blend of florescent grains



ARTICLE CODE	CATEGORY	DIMENSION	THICKNESS
MCVGQ01-T	THIN ZINESTONE	122CMX244CM	2-3 MM
		61CMX122CM	
MCVGQ01-A	ACCENT ZINESTONE	15CMX80CM	6 MM

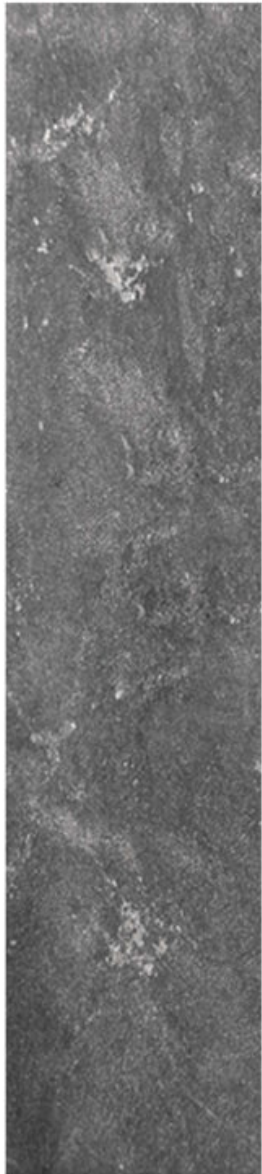
VALLEY GREY



STORMY RETREAT

QUARTZITE STONE

A plush mix of dated coarse grey stone



ARTICLE CODE	CATEGORY	DIMENSION	THICKNESS
MCSRQ01-T	THIN ZINE STONE	61CMX122CM	2-3 MM
MCSRQ01-A	ACCENT ZINE STONE	15CMX60CM	6 MM

CLOUDED PEARL

SAND STONE

A creamy homogenous surface
of rugged sandstone



ARTICLE CODE	CATEGORY	DIMENSION	THICKNESS
MCCPS01-T	THIN ZINE STONE	61CMX122CM	2-3 MM
MCCPS01-A	ACCENT ZINE STONE	15CMX60CM	6 MM

BRUSHED BUKLE

SAND STONE

A creamy homogenous surface
of gentle sandstone



ARTICLE CODE	CATEGORY	DIMENSION	THICKNESS
MCBBS01-T	THIN ZINE STONE	61CMX122CM	2-3 MM
MCBBS01-A	ACCENT ZINE STONE	15CMX60CM	6 MM

DELHI BAZAAR

SAND STONE

A vibrant form of rock reddened
under the intensity of the sun



ARTICLE CODE	CATEGORY	DIMENSION	THICKNESS
MCDBS01-T	THIN ZINE STONE	61CMX122CM	2-3 MM
MCDBS01-A	ACCENT ZINE STONE	15CMX60CM	6 MM

DESERT LUSH

SAND STONE

A peachy peel embodied into the rugged state of this deli bred stone



ARTICLE CODE	CATEGORY	DIMENSION	THICKNESS
MCDLS01-T	THIN ZINE STONE	61CMX122CM	2-3 MM
MCDLS01-A	ACCENT ZINE STONE	15CMX60CM	6 MM

TUSCAN TREASURE

SAND STONE

An orange peel resemblance of
furrowed stone



ARTICLE CODE	CATEGORY	DIMENSION	THICKNESS
MCTTS01-T	THIN ZINE STONE	61CMX122CM	2-3 MM
MCTTS01-A	ACCENT ZINE STONE	15CMX60CM	6 MM

AUTUMN BROWN





AUTUMN BROWN

SAND STONE

An intimate portrayal of the autumn leaf
grained with brown veins

ARTICLE CODE	CATEGORY	DIMENSION	THICKNESS
MCABS01-T	THIN ZINE STONE	61CMX122CM	2-3 MM
MCABS01-A	ACCENT ZINE STONE	15CMX60CM	6 MM



MUTED GREEN

SAND STONE

An intimate portrayal of the spring leaf
grained with brown veins

ARTICLE CODE	CATEGORY	DIMENSION	THICKNESS
MCMGS01-T	THIN ZINE STONE	61CMX122CM	2-3 MM
MCMGS01-A	ACCENT ZINE STONE	15CMX60CM	6 MM

MERCURY JEWEL

SAND STONE

A violet affair of smooth grains crusted
on the rough textured sand stone



ARTICLE CODE	CATEGORY	DIMENSION	THICKNESS
MCMJS01-T	THIN ZINE STONE	61CMX122CM	2-3 MM
MCMJS01-A	ACCENT ZINE STONE	15CMX60CM	6 MM

ROYAL BERRY





ROYAL BERRY

SAND STONE

A lavender imitation fused naturally in
a rough wave of entropy

ARTICLE CODE	CATEGORY	DIMENSION	THICKNESS
MCRBS01-T	THIN ZINE STONE	61CMX122CM	2-3 MM
MCRBS01-A	ACCENT ZINE STONE	15CMX60CM	6 MM



*Fashion
Club*

BETON
CONCRETE VENEER
GREY



BETON GREY

CONCRETE VENEER

Grey concrete laid in an easy-fix plate

ARTICLE CODE

CATEGORY

DIMENSION

THICKNESS

MCBGCV01-T

THIN
ZINE STONE

61CMX122CM

2-3 MM

BETON BEIGE

CONCRETE VENEER

Beige concrete laid in an easy-fix plate



ARTICLE CODE	CATEGORY	DIMENSION	THICKNESS
MCBBCV01-T	THIN ZINE STONE	61CMX122CM	2-3 MM

WHITE MARMOR

CONCRETE VENEER

A soft milkshake blend of tanned
granite crafted into thin sheets



ARTICLE CODE

CATEGORY

DIMENSION

THICKNESS

MCWMM01-T

THIN
ZINE STONE

61CMX122CM

2-3 MM



BLACK MARMOR

CONCRETE VENEER

A dark shade of grey
granite crafted into thin sheets

ARTICLE CODE	CATEGORY	DIMENSION	THICKNESS
MCBMM01-T	THIN ZINE STONE	61CMX122CM	2-3 MM



VINTAGE RUST

RUST VENEER

An industrial hue of warm
rusty orange sheets

ARTICLE CODE	CATEGORY	DIMENSION	THICKNESS
MCVRR01	THIN ZINE STONE	61CMX122CM 244CMX122CM 280CMX122CM	2-3 MM



BRILIANT RUST

RUST VENEER

A finely portrayed sheet of
ornamental rust lines

ARTICLE CODE	CATEGORY	DIMENSION	THICKNESS
MCBRR01	THIN ZINE STONE	61CMX122CM	2-3 MM
		244CMX122CM	
		280CMX122CM	

GUIDELINE

This document is a comprehensive guide on how to handle, prepare and install the ZINE STONE products within interior and exterior applications. Please ensure that all instructions within this guide are abided by in order to retain the full warranty provided by the ZINE STONE warranty.



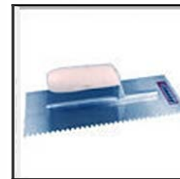
**FLAT RUBBER
TROWEL**



**NEUTRAL CURE
SILICONE**



PENCIL



**2 MM
TROWEL**



HEAT GUN



**NON-SOLVENT
BASED ADHESIVE**



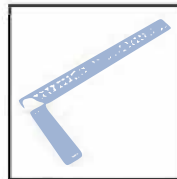
**CIRCULAR
SAW**



**METAL
SNIPPER**



**ANGLED
GRINDER**



RIGHT ANGLE



STONE SEALER

SURFACE PREPARATION

Any surface which shall be made ready to receive ZINE STONE surfaces should be free from dust, dirt, oils and debris. Ambient temperatures should be maintained between 10°C and 35°C while any installation is taking place to ensure proper adhesive bonding.

HANDLING & STORAGE

ZINE STONE surfaces are sharp edged flexible sheets which are made of 100% natural stone. Therefore, the following precautions are to be implemented when shifting the sheets:

All handlers are to wear cotton gloves
All sheets are to be carried individually
All sheets are to be carried from the long edge
Sheets of size 122 cm x 244 cm and above should be handled by two persons

ZINE STONE should be stored horizontally stacked in the same format received within the delivered pallets. The dedicated storage facility should be reasonably ventilated between 10°C and 35°C and free of dampness/humidity.
Storage of ZINE STONE stacks should not last longer than six months.

INSTALLATION Fabrication

ZINE STONE is a revolutionary range of natural stone surfaces which can be applied nominally faster than average stone claddings with reduced efforts. All sheet ranges are below 6 mm thick which renders the process of cutting around sharp edges for sockets, switches and/or irregular parameters a relatively easy task.

To do so;
Draw the desired sheet cutting detail which is required to be removed from the sheet using a pencil and right angle.

Use a metal snipper or circular saw to cut through the desired outer edges of the sheet.

In order to cut through internal edges, use an angled grinder.

The thermoplastic resin backing used for ZINE STONE gives the sheet a unique capability of undergoing forming treatment for applications on sharp bends.
To do so, apply heat evenly across the sheet for approximately 15 seconds using a heat gun and bend the sheet in the desired shape according to the receiving surface.

APPLICATION

Once the sheet has been cut-out in the required dimension:

WALL/CEILING APPLICATIONS THIN / ULTRA THIN ZINE STONE

Use a 2 mm notched trowel to spread a non-solvent based adhesive evenly on the back of the sheet

OR

Apply a neutral cure silicon evenly spaced at 8 cm apart trailed along the full width and length of the sheet

Ensure that the surface receiving the ZINE STONE sheet is free of dust particles and leveled with a maximum tolerance of 1mm to avoid air gaps and visible joint problems. After pressing the sheet evenly against the receiving surface, use a flat rubber trowel to ensure that the ZINE STONE sheet is bonded properly to the receiving surface.

DECO-LIGHT ZINE STONE

Apply clear non-solvent based silicon to the edges of the sheet which shall be framed in order to avoid opaque patterns when backlighting the surface

ACCENT ZINE STONE

ACCENT ZINE STONE is the easiest of all ZINE STONE products to apply.

Start by peeling of the paper guard at the back of the ACCENT ZINE STONE sheet.

Directly press the ready-to-fix sheet onto the receiving surface and apply marginal pressure using a flat rubber trowel. Caution, use of excessive force with the flat rubber trowel might chip edges of the ACCENT ZINE STONE

JOINERY APPLICATIONS

ULTRA THIN ZINE STONE

ZINE STONE can also be applied to furniture articles in the same fashion as PVC laminate pressings. ULTRA THIN ZINE STONE is the recommended sheet for applications on wood, plasterboard, cement boards or metals. To bond the sheet to the receiving surface, use a single component PU (polyurethane) adhesive and press the sheet with an insulated rubber pad for an average period of six minutes under 80°C.

POST-INSTALLATION

After installing the ZINE STONE surfaces on the receiving surface, apply a quality grade water based penetrating stone sealer to ensure the porosity of the sheet is controlled against oils and grease and to prevent sun spots.

It is important to recognize that ZINE STONE surfaces are made of 100% natural stone materials. Therefore, all surfaces, even if sealed, must be maintained by regular cleaning using a quality grade granite, quartz & stone cleaner every 30 days. It is recommended to use a cleaning agent which contains a small amount of impregnator to ensure the surface remains sealed.

Z I N E S T O N E

www.zinestone.co.uk

Email : info@zinestone.co.uk

Contact Us : +447441426144